

# MEET GEN 5



DAY  
NIGHT  
THERMAL

# 2024

EUROPE



THE FUTURE  
OF OPTICS

[www.atneu.com](http://www.atneu.com)

<b>X-Sight 5 / 5 LRF Series</b> ULTRA HD 4K+ SMART DAY & NIGHT VISION RIFLE SCOPE	page 4
<b>X-Sight LTV Series</b> ULTRA LIGHTWEIGHT DAY & NIGHT VISION RIFLE SCOPE	page 6
<b>Mars 5 XD / 5 XD LRF Series</b> 1280X1024 SMART HD THERMAL RIFLE SCOPE	page 8
<b>Mars 5 / 5 LRF Series</b> SMART HD THERMAL RIFLE SCOPE	page 10
<b>Mars 4 Series</b> SMART HD THERMAL RIFLE SCOPE	page 12
<b>Mars LTV Series</b> ULTRA LIGHT THERMAL RIFLE SCOPE	page 14
<b>TICO LTV Series</b> THERMAL MONOCULAR / CLIP-ON	page 16
<b>ODIN LT Series</b> COMPACT THERMAL MONOCULAR	page 18
<b>BLAZE Series</b> COMPACT THERMAL MONOCULAR	page 20
<b>10-42x LRF Series</b> LASER RANGEFINDING BINOCULAR	page 22
<b>BinoX 4T Series</b> SMART HD THERMAL BINOCULARS	page 24
<b>X-Spotter 5 20-100x</b> ULTRA HD 4K+ DAY/NIGHT SPOTTING SCOPE	page 26
<b>IR850 Pro</b> LONG RANGE INFRA-RED ILLUMINATOR	page 28
<b>IR850 Supernova</b> EXTREME RANGE INFRA-RED ILLUMINATOR	page 28
<b>IR940</b> LONG RANGE INFRA-RED ILLUMINATOR	page 28
<b>Power Weapon Kit</b> 20,000 mAh BATTERY PACK	page 28
<b>Extended Life Battery Kit</b> 10,000 mAh BATTERY PACK	page 28
<b>Low Profile Quick Detach Heavy Duty Mount</b>	page 29
<b>High Profile Quick Detach Heavy Duty Mount</b>	page 29
<b>Quick Detach Mount</b>	page 29
<b>Tactical Carry Case</b>	page 29
<b>Deluxe Binoculars Bag</b>	page 29
<b>X-Sound</b> HEARING PROTECTOR	page 30
<b>Thermal Targets</b>	page 30
<b>X-TRAC 5</b> TACTICAL REMOTE ACCESS CONTROL SYSTEM	page 30





## ULTRA HD OPTICS

Experience ATN's Ultra HD Optics like never before! Our new 4K "True Color" Sensor is capable of capturing crisp clear images

at the furthest ranges with increased daytime color resolution (4 million colors). With 24,000 shades of grey, you'll also get incredibly smooth nighttime gradations from darkness to light.

All 5th Gen Optics have been redesigned to meet strict specifications to match our 4K sensor performance. The new Quad Core Processor that drives our core allows for faster response, higher

FPS rate, better streaming, and the use of a multitude of new image processing techniques.

The next several pages will help familiarize you with just some of the amazing features the new Smart HD and Ultra HD Optics have to offer.

**THE FUTURE OF OPTICS IS HERE!**



**4K+**  
SENSOR

**SMART HD  
OPTICS**

**5  
GEN**

# X-SIGHT 5 / 5 LRF SERIES

ULTRA HD 4K+ SMART DAY & NIGHT VISION RIFLE SCOPE



\*scope view

## **4K** ULTRA HD 4K SENSOR

Experience true-to-life visuals day and night with the new superior 4K sensor.

## **BUILT-IN LASER RANGEFINDER (OPTIONAL)**

Achieve precise shooting and never miss a target with this advanced feature.

## **ADVANCED BALLISTIC CALCULATOR**

Seamlessly integrate shot accuracy by accounting for environmental variables directly within the scope.

## **4K VIDEO** 4K VIDEO RECORDING

Record and share your experiences in real 4K quality with friends and family.

## **240 fps** SLOW MOTION

Capture crucial moments with stunning clarity at 240 frames per second.

## **CUSTOM RETICLE EDITOR**

Unleash creativity with ATN to design and share unique reticles.



## SPECIFICATIONS

Item	X-Sight 5 3-15x	X-Sight 5 5-25x	X-Sight 5 LRF 3-15x	X-Sight 5 LRF 5-25x
Laser Rangefinder	No		Yes	
Sensor	ATN 4K+ 4056x3040 30/60/120 FPS			
Magnification	3-15x	5-25x	3-15x	5-25x
Field of view	9°	6.3°	9°	6.3°
Field of view	15.7 m / 100 m	11 m / 100 m	15.7 m / 100 m	11 m / 100 m
Core	ATN Gen V Quad Core			
Micro Display	1280x960			
Eye relief	90 mm			
Video Record Resolution	Up to 4K UHD 30/60/120 fps			
Ballistic Calculator	Yes			
WiFi (Streaming, Gallery, & Controls)	iOS, Android			
3D Gyroscope	Yes			
3D Accelerometer	Yes			
RAV (Recoil Activated Video)	Yes			
Electronic Compass	Yes			
Smooth Zoom	Yes			
Radar	Yes			
Reticles	Multiple Patterns & Color Options, User Custom reticles			
Reticle Editor	Yes			
Microphone	Yes			
MicroSD card	4 to 64 Gb (V30 class)			
USB, type C	Yes			
Mount	30 mm Standard Rings (included)			
Battery life (Li-ion)	Up to 14 hours			
Waterproof rating / IP rating	Weather resistant			
Operating Temperature	-28 °C to 48 °C			
Dimensions	337x56x54 mm	360x56x54 mm	362x76x56 mm	385x76x56 mm
Weight	0.85 kg	0.89 kg	0.95 kg	0.99 kg
Warranty	2 years			

\*Specifications subject to change without notice.

## OPTIONAL ACCESSORIES



**ATN X-TRAC 5  
REMOTE CONTROL**



**ATN IR 850 SUPERNOVA  
IR ILLUMINATOR**

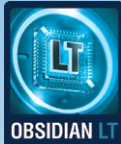


**ATN WEAPON  
BATTERY PACK**



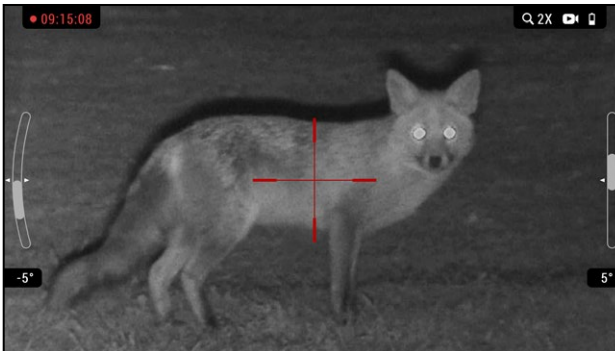
**ATN LP QUICK  
DETACH MOUNT**





# X-SIGHT LTV SERIES

ULTRA LIGHTWEIGHT DAY & NIGHT VISION RIFLE SCOPE



\*scope view

## QHD+ SENSOR

Experience crisp, vivid imagery around the clock with ATN. This technology ensures exceptional clarity both day and night.

## ERGONOMIC DESIGN AND USER INTERFACE

Features a classic, user-friendly design with a wide field of view, easily mountable on any platform using 30 mm standard mount rings.

## ENHANCED NIGHT VISION MODE

Overcome the challenges of darkness with this feature, ensuring uninterrupted performance.

## HD VIDEO RECORDING

Capture your hunting experiences in sharp 720P quality for future enjoyment.

## ONE SHOT ZERO

Enables fast and easy sight-in of your scope, along with a selection of multiple reticles.



5-15x

3-9x

## SPECIFICATIONS

	X-Sight LTV 3-9x	X-Sight LTV 5-15x
Item #	DGWSXS309LTV	DGWSXS515LTV
Magnification	3-9x	5-15x
Sensor	ATN QHD+ M584 Sensor	
Sensor Resolution	2688 x1944 @ 60 fps	
Core	ATN Obsidian LT Core	
Micro Display	1280x720 px	
Eye relief	90 mm	
3D Gyroscope	Yes	
3D Accelerometer	Yes	
Night Vision Mode	Yes	
Video Record	Yes	
Reticles	Multiple Patterns	
Video Record Resolution	1280x720	
Miscro SD Card	4 Gb to 64 Gb	
USB, type C	Charging Port	
Mount	30 mm Standard Rings (included)	
IR Illuminator	Included	
Battery life (Li-ion)	≈ 10 hrs	
Battery type	Internal Lithium Ion Battery	
Waterproof rating / IP rating	Weather resistant	
Operating Temperature	-28 ° C to 48 ° C	
Dimensions (body only)	310x55x55 mm	330x55x55 mm
Weight	0.75 kg	0.78 kg
Warranty	2 years	

\*Specifications subject to change without notice.

## OPTIONAL ACCESSORIES



ATN X-SOUND



ATN IR 850 PRO  
IR ILLUMINATOR



ATN WEAPON  
BATTERY PACK



ATN QUICK DETACH  
MOUNT





# MARS 5 XD / 5 XD LRF SERIES

## 1280X1024 GEN 5 THERMAL SCOPE



\*scope view

### **XD** 1280X1024 12 μm THERMAL SENSOR

Offers unparalleled detail from a distance, with a million more pixels than competitors for superior image quality, day or night.

### **RETICLE** CUSTOM RETICLE EDITOR

Design and share unique reticles using the ATN Custom Reticle Editor for personalized hunting experiences.

### **LRF** BUILT-IN LASER RANGEFINDER (OPTIONAL)

Achieve pinpoint accuracy and ensure every shot counts, regardless of the distance to your target.

### **HD** HD VIDEO RECORDING

Capture your hunting trips in high-definition, reliving each moment with clear, crisp video quality.

### **BC** ADVANCED BALLISTIC CALCULATOR

Tailor each shot to environmental conditions, ensuring accuracy in any setting.

### **EH** ENHANCED HUNTING FEATURES

Includes One Shot Zero, Profile Manager, Recoil Activated Video (RAV), and extended battery life, making it an ideal scope for any hunting scenario.





## SPECIFICATIONS

Model	Mars 5 XD			Mars 5 XD LRF		
	Mars 5 XD 2-20x	Mars 5 XD 3-30x	Mars 5 XD 4-40x	Mars 5 XD LRF 2-20x	Mars 5 XD LRF 3-30x	Mars 5 XD LRF 4-40x
Item #	MS51250A	MS51275A	MS51210A	MS51250LRF	MS51275LRF	MS51210LRF
Laser Rangefinder	No			Yes		
Sensor	1280x1024 60 fps 12 μm					
Magnification	2-20×	3-30×	4-40×	2-20×	3-30×	4-40×
Field of view, degrees	17.6x13.2	11.8x8.8	8.8x6.6	17.6x13.2	11.8x8.8	8.8x6.6
Core	ATN Gen V Quad Core T					
Micro Display	OLED display 1024x768					
Eye relief	90 mm					
Video Record Resolution	Up to 1280x960 @ 60 fps					
Ballistic Calculator	Yes					
WiFi (Streaming, Gallery, & Controls)	iOS & Android					
Bluetooth	Yes					
3D Gyroscope	Yes					
3D Accelerometer	Yes					
RAV (Recoil Activated Video)	Yes					
Electronic Compass	Yes					
Smooth Zoom	Yes					
Radar	Yes					
Reticles	Multiple Patterns & Color Options, User Custom reticles					
Reticle Editor	Yes					
Microphone	Yes					
MicroSD card	4 to 64 Gb					
USB, type C	Yes					
Mount	30 mm Standard Rings (included)					
Battery life (Li-ion)	10 hrs					
Waterproof rating / IP rating	Weather resistant					
Human Detection Range, m	2150	3200	4000	2150	3200	4000
Human Recognition Range, m	860	1440	1800	860	1440	1800
Human Identification Range, m	480	610	720	480	610	720
Operating Temperature	-28 °C to 48 °C					
Dimensions	365x73x73 mm	395x73x73 mm	425x73x73 mm	365x96x73 mm	395x96x73 mm	425x96x73 mm
Weight	1.13 kg			1.2 kg		
Warranty	3 years					

\*Specifications subject to change without notice

## OPTIONAL ACCESSORIES



**ATN X-SOUND**



**ATN X-TRAC 5  
REMOTE CONTROL**



**ATN HP QUICK  
DETACH MOUNT**



**ATN THERMAL  
TARGETS**





# MARS 5 / 5 LRF SERIES

## SMART HD THERMAL RIFLE SCOPE



\*scope view

### NEXT GEN ULTRA SENSITIVE 12 μm THERMAL SENSOR

Delivers richer colors and greater detail, enhancing target detection day or night.

### BUILT-IN LASER RANGEFINDER (OPTIONAL)

Enables precise target ranging and accurate shooting over any distance.

### ADVANCED BALLISTIC CALCULATOR

Provides precise shot data for your scope, ensuring accuracy and effectiveness.

### CUSTOM RETICLE EDITOR

Design and share personalized reticles for a unique hunting experience.

### HD VIDEO RECORDING

Capture your hunting adventures in high-definition, reliving each moment with crystal-clear video quality.

### ADDITIONAL FEATURES FOR ENHANCED HUNTING

Includes One Shot Zero, Profile Manager, Recoil Activated Video (RAV), and extended battery life, making it an ideal scope for hunters.



# SPECIFICATIONS

Model	Mars 5 320			Mars 5 LRF 320			Mars 5 640				Mars 5 LRF 640			
	Mars 5 320 3-12x	Mars 5 320 4-16x	Mars 5 320 5-20x	Mars 5 LRF 320 3-12x	Mars 5 LRF 320 4-16x	Mars 5 LRF 320 5-20x	Mars 5 640 2-16x	Mars 5 640 3-24x	Mars 5 640 4-32x	Mars 5 640 5-40x	Mars 5 LRF 640 2-16x	Mars 5 LRF 640 3-24x	Mars 5 LRF 640 4-32x	Mars 5 LRF 640 5-40x
Item #	MS5319A	MS5325A	MS5335A	MS5319LRF	MS5325LRF	MS5325LRF	MS5625A	MS5635A	MS5650A	MS5675A	MS5625LRF	MS5635LRF	MS5650LRF	MS5675LRF
Laser Rangefinder	No			Yes			No				Yes			
Sensor	320x240 60 fps 12 µm						640x480 60 fps 12 µm							
Magnification	3-12x	4-16x	5-20x	3-12x	4-16x	5-20x	2-16x	3-24x	4-32x	5-40x	2-16x	3-24x	4-32x	5-40x
Field of view, degrees	11.6x8.7	8.8x6.6	6.3x4.7	11.6x8.7	8.8x6.6	6.3x4.7	17.6x13.2	12.6x9.4	8.8x6.6	5.9x4.4	17.6x13.2	12.6x9.4	8.8x6.6	5.9x4.4
Core	ATN Gen V Quad Core T													
Micro Display	OLED display 1024x768													
Eye relief	90 mm													
Video Record Resolution	Up to 1280x960 @ 60 fps													
Ballistic Calculator	Yes													
WiFi (Streaming, Gallery, & Controls)	iOS & Android													
Bluetooth	Yes													
3D Gyroscope	Yes													
3D Accelerometer	Yes													
RAV (Recoil Activated Video)	Yes													
Electronic Compass	Yes													
Smooth Zoom	Yes													
Radar	Yes													
Reticles	Multiple Patterns & Color Options, User Custom reticles													
Reticle Editor	Yes													
Microphone	Yes													
MicroSD card	4 to 64 Gb													
USB, type C	Yes													
Mount	30 mm Standard Rings (included)													
Battery life (Li-ion)	10 hrs													
Waterproof rating / IP rating	Weather resistant													
Human Detection Range, m	750	960	1400	750	960	1400	1250	1600	2150	3300	1250	1600	2150	3300
Human Recognition Range, m	335	432	630	335	432	630	560	720	960	1485	560	720	960	1485
Human Identification Range, m	205	260	378	205	260	378	330	432	570	680	330	432	570	680
Operating Temperature	-28 °C to 48 °C													
Dimensions	316x56x54 mm			341x76x56 mm			316x56x54 mm		330x56x54 mm		341x75x56 mm		355x76x56 mm	
Weight	0.88 kg			0.93 kg			0.88 kg		1.13 kg		0.93 kg		1.2 kg	
Warranty	3 years													

\*Specifications subject to change without notice

## OPTIONAL ACCESSORIES



**ATN X-TRAC 5  
REMOTE CONTROL**



**ATN X-SOUND**



**ATN WEAPON  
BATTERY PACK**



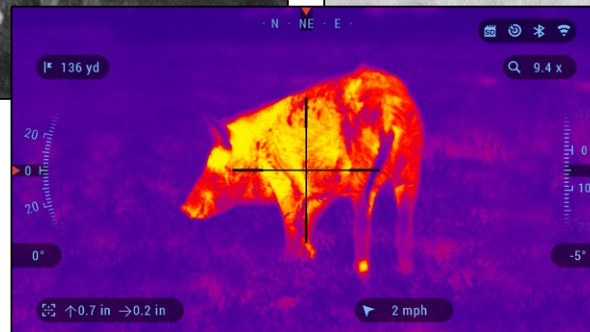
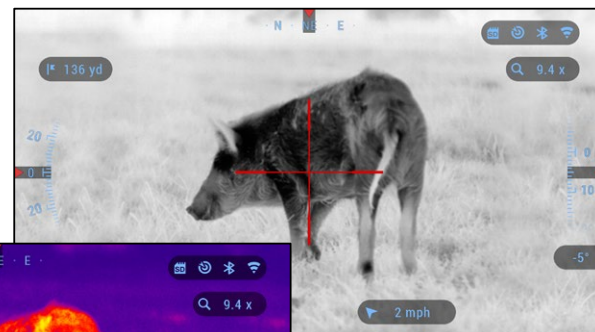
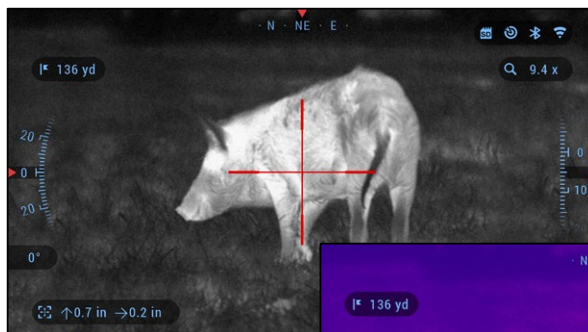
**ATN LP QUICK  
DETACH MOUNT**

www.atn.eu.com | e-mail: sales@atn.eu.com, sales@atnusa.com



# MARS 4 SERIES

## SMART HD THERMAL RIFLE SCOPE



### ULTRA SENSITIVE THERMAL SENSOR

Is capable of capturing crisp clear images at the furthest ranges with improved resolution, higher sensitivity, and smooth gradations even in total darkness.

### RAV (RECOIL ACTIVATED VIDEO)

Takes care of all your worries. Just relax and focus on your game and let the Obsidian Core do the heavy lifting

### HD VIDEO RECORDING

You asked and we listened ThOR 4 not only Streams Video to your mobile device at HD resolution and can simultaneously Record to the SD card inside.

### BALLISTIC CALCULATOR

Hunt responsibly by making sure your shot hits the target Each and Every time Dual Stream.

### ADDITIONAL FEATURES FOR ENHANCED HUNTING

Includes One Shot Zero, Profile Manager, Recoil Activated Video (RAV), and extended battery life, making it an ideal scope for hunters.

### ULTRA-LOW POWER CONSUMPTION

Offers up to 9 hours of operation, making it ideal for long hunting trips or observations.



## SPECIFICATIONS

	<b>MARS 4 384 1.25-5x</b>	<b>MARS 4 384 2-8x</b>	<b>MARS 4 384 4.5-18x</b>	<b>MARS 4 384 7-28x</b>	<b>MARS 4 640 1-10x</b>	<b>MARS 4 640 1.5-15x</b>	<b>MARS 4 640 2.5-25x</b>	<b>MARS 4 640 4-40x</b>
<b>Item #</b>	MS4K3819	MS4K3825	MS4K3850	MS4K3875	MS4K6419	MS4K6425	MS4K6450	MS4K6475
<b>Sensor</b>	Gen 4 384x288				Gen 4 640x480			
<b>Magnification</b>	1.25-5x	2-8x	4.5-18x	7-28x	1-10x	1.5-15x	2.5-25x	4-40x
<b>Field of view</b>	16°x12.5°	12°x9.5°	6°x4.7°	3°x2.4°	32°x25°	24°x19°	12.5°x9.7°	8.3°x6.2°
<b>Core</b>	ATN Obsidian IV Dual Core T							
<b>Micro Display</b>	1280x720 HD Display							
<b>Eye relief</b>	90 mm							
<b>Video Record Resolution</b>	1280x960 @ 30/60 fps							
<b>WiFi (Streaming, Gallery, &amp; Controls)</b>	iOS & Android							
<b>RAV (Recoil Activated Video)</b>	Yes							
<b>Reticles</b>	Multiple Patterns & Color Options							
<b>Micro SD card</b>	From 4 to 64 GB							
<b>USB, type C</b>	Yes							
<b>Mount</b>	30 mm Standard Rings (included)							
<b>Internal Lithium Ion Battery</b>	18+ hrs				16+ hrs			
<b>Waterproof rating / IP rating</b>	Weather resistant							
<b>Dimensions</b>	332x76x76 mm	343x76x76 mm	351x76x76 mm	375x76x76 mm	332x76x76 mm	343x76x76 mm	351x76x76 mm	375x76x76 mm
<b>Weight</b>	0.88 kg	0.92 kg	1.0 kg	1.06 kg	0.88 kg	0.92 kg	1.0 kg	1.06 kg
<b>Warranty</b>	3 years							
<b>Human Detection Range, m</b>	750	960	1800	3000	830	1050	1950	3300
<b>Human Recognition Range, m</b>	335	480	720	1320	350	530	800	1450
<b>Human Identification Range, m</b>	205	300	430	720	225	330	475	800

\*Specifications subject to change without notice

## OPTIONAL ACCESSORIES



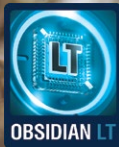
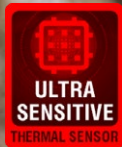
**ATN X-SOUND**



**ATN WEAPON  
BATTERY PACK**



**ATN LP QUICK  
DETACH MOUNT**



# MARS LTV SERIES

## ULTRA LIGHT THERMAL RIFLE SCOPE



### **ADVANCED 60 HZ 12 $\mu$ m THERMAL SENSOR**

Delivers clear imagery in challenging conditions and smooth videos with minimal distortion.

### **VIDEO RECORDING**

Enables capturing memorable hunting moments, shareable with friends and family.

### **BLACK HOT/WHITE HOT AND COLOR MODES**

Provides versatile imaging options to enhance visibility and target distinction in various conditions.

### **ONE SHOT ZERO**

Simplifies zeroing with a single shot; adjust the reticle to the first impact point for accuracy.

### **LIGHTWEIGHT DESIGN AND EASY MOUNTING**

Makes the Mars LTV suitable for various hunting scenarios and compatible with multiple platforms.





## SPECIFICATIONS

	Mars LTV 256				Mars LTV 320			Mars LTV 640		
Item #	MSLTV212X	MSLTV219X	MSLTV225X	MSLTV235X	MSLTV319X	MSLTV325X	MSLTV335X	MSLTV625X	MSLTV635X	MSLTV650X
<b>Resolution</b>	256x192 px / 12 μm				320x240 px / 12 μm			640x480 / 12 μm		
<b>Magnification</b>	1.5-4.5x	2-6x	3-9x	4-12x	3-9x	4-12x	5-15x	2-6x	3-9x	4-12x
<b>Field of view</b>	14.2°x10.7°	8.9°x6.7°	7.1°x5.4°	4.9°x3.7°	11.6°x8.7°	8.8°x6.6°	6.3°x4.7°	17.6°x13.2°	12.6°x9.4°	8.8°x6.6°
<b>Display Resolution</b>	OLED 1024x768 px									
<b>Eye relief</b>	90 mm									
<b>Video Record Resolution</b>	1024x768 px									
<b>3D Accelerometer</b>	Yes									
<b>Color modes</b>	White Hot/Black Hot/Color Modes									
<b>Reticles</b>	Multiple Patterns									
<b>Micro SD card</b>	4 to 64 GB									
<b>USB, type C</b>	Yes									
<b>Mount</b>	30 mm Standard Rings (not included)									
<b>Internal Lithium Ion Battery</b>	9 + hrs									
<b>IP rating</b>	Weather resistant									
<b>Human Detection Range, m</b>	515	825	1035	1500	715	910	1510	740	920	1670
<b>Human Recognition Range, m</b>	130	210	260	375	305	455	680	375	485	700
<b>Human Identification Range, m</b>	65	105	130	190	200	290	400	250	325	440
<b>Dimensions</b>	292 x 56 x 55 mm									
<b>Weight</b>	0.65 kg									
<b>Warranty</b>	3 years									

\*Specifications subject to change without notice.

## OPTIONAL ACCESSORIES



**ATN X-SOUND**



**ATN WEAPON BATTERY PACK**

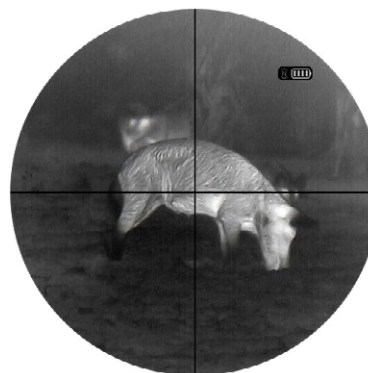


**ATN QUICK DETACH MOUNT**



# TICO LTV SERIES

## THERMAL MONOCULAR / CLIP-ON



### TRANSFORMS DAYTIME SCOPE TO THERMAL IMAGING

Upgrades standard optics to thermal vision effortlessly.

### HIGH-RESOLUTION THERMAL IMAGING

Delivers clear, detailed views in thermal mode, improving night-time hunting and observation.

### MULTIPLE VIEWING MODES

Includes black hot, white hot, and color modes, allowing for adaptable viewing based on personal preference.

### EASY-TO-MOUNT FEATURE

Enables capturing of hunting experiences across night vision, thermal, and combined modes.

### LIGHTWEIGHT CONSTRUCTION

Designed for comfort during extended use without adding excess weight to your equipment.

### ULTRA-LOW POWER CONSUMPTION

Offers up to 9 hours of operation, making it ideal for long hunting trips or observations.





## SPECIFICATIONS

	ATN TICO LTV 256 1X	ATN TICO LTV 320 1X	ATN TICO LTV 640 1X
Item #	TICOLTV225X	TICOLTV325X	TICOLTV650X
Sensor	256, 12µm	320, 12µm	640, 12µm
Magnification		1-4x	
Field of view	7.0°x 5.4°	8.8° x 6.6°	8.8° x 6.6°
Display Resolution		OLED 1024x768	
Eye relief		Unlimited	
Color modes		10 palletes	
Monocular mode		Yes	
Digital zoom		2x, 4x	
Mount		Modular adapter or QDM	
Battery (Li-ion)		1 cell 18650, removable.	
Battery life		8 hours	
Waterproof rating / IP rating		Weather resistant	
Operating temperature		-20 °C to 48 °C	
Detection Range, m	835	1040	2080
Recognition Range, m	210	260	520
Identification Range, m	105	130	260
Dimensions		132x60x78 mm	152x60x78 mm
Weight	0.4 kg	0.4 kg	0.47 kg
Warranty		3 years	

\*Specifications subject to change without notice.

\*\*When choosing to use this option, the incorporation of your widgets are absent. Widgets would include reticle, time stamp, and logo that are added during video processing.

## OPTIONAL ACCESSORIES



**RUSAN  
ADAPTER**



**ATN X-SOUND**



**ATN THERMAL  
TARGETS**





# ODIN LT SERIES

## COMPACT THERMAL MONOCULAR



\*scope view



### ATN'S OBSIDIAN LT CORE

Powers a hands-free, compact, and ergonomic thermal monocular for an exceptional observation experience, even at night.



### HIGH-RESOLUTION DISPLAY

Ensures the images you view are clear and vivid, enhancing the overall observation quality.



### WHITE HOT/BLACK HOT MODE

Offers the option to display moving objects in your chosen color palette for enhanced visibility.



### VERSATILE MOUNTING OPTIONS

Can be used hand-held, helmet-mounted, or head-mounted for comfortable, long-term observation.



### COMPACT DESIGN

Small enough to fit in one hand, offering ease of use and quick menu access.

## SPECIFICATIONS

	ODIN LT 320 2-4x	ODIN LT 320 3-6x	ODIN LT 320 4-8x	ODIN LT 640 1-4x	ODIN LT 640 2-8x	ODIN LT 640 3-12x
<b>SKU</b>	TIMNODN319X	TIMNODN325X	TIMNODN335X	TIMNODN619X	TIMNODN625X	TIMNODN635X
<b>Resolution</b>	320x240, 60 fps, 12 μm			640x480, 60 fps, 12 μm		
<b>Magnification</b>	2-4x	3-6x	4-8x	1-4x	2-8x	3-12x
<b>Field of view</b>	11.6°x8.7°	8.8°x6.6°	6.3°x4.7°	23.2°x17.4°	17.6°x13.2°	12.6°x9.4°
<b>Core</b>	ATN Obsidian Core LT					
<b>Display Resolution</b>	1280x960 px					
<b>Eye relief</b>	25 mm					
<b>Color modes</b>	White Hot / Black Hot					
<b>Battery type</b>	1 x CR123A (Li-ion)					
<b>Battery life (Li-ion)</b>	2.5 Hrs (or Optional Rechargeable Battery with 5 Hrs of runtime)					
<b>Charging</b>	USB, type C port is on the Optional Rechargeable Battery					
<b>IP rating</b>	Weather resistant					
<b>Human Detection Range, m</b>	535	910	1510	715	1250	1580
<b>Human Recognition Range, m</b>	380	455	680	445	580	720
<b>Human Identification Range, m</b>	230	290	340	260	320	350
<b>Operating Temperature</b>	-28 °C to 48 °C					
<b>Dimensions</b>	131x71x46 mm		145x71x51 mm	131x71x46 mm		145x71x51 mm
<b>Weight</b>	0.29 kg		0.34 kg	0.29 kg		0.34 kg
<b>Warranty</b>	3 years					

\*Specifications subject to change without notice

## OPTIONAL ACCESSORIES



**EXTENDED LIFE  
BATTERY PACK**



**ATN NOROTOS  
HELMET MOUNT**



**UNIVERSAL HEADSET  
MOUNT**



# BLAZE SERIES

## COMPACT THERMAL MONOCULAR



\*scope view



### HIGH-RESOLUTION THERMAL IMAGING

This advanced sensor captures high-resolution thermal images, enabling clear visibility in total darkness by identifying heat signatures.

### BUILT-IN WI-FI AND APP CONNECTIVITY

Wireless connect to smart phone and App to adjust the monocular, take photos or record thermal video directly from the smart phone.

### LIGHT WEIGHT AND PORTABLE

Pocket-sized and weighs less than 350g, making it easy to carry and hold for long periods of time.

### LOW POWER CONSUMPTION

Built-in rechargeable battery with up to 9 hours of operation time and external power supply option.

### VIDEO RECORD AND PHOTO

Built-in still image and video recording capabilities. Videos and pictures can be stored on a MicroSD card.

### MULTIPLE VIEWING MODES

Few color palettes to choose for a custom viewing experience.



BlazeTrek

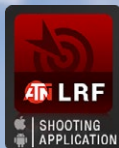


BlazeHunter

## SPECIFICATIONS

	BlazeTrek-325	BlazeTrek-625	BlazeHunter-325	BlazeHunter-335	BlazeHunter-625	BlazeHunter-635
<b>SKU</b>	BlazeTrek-325	BlazeTrek-625	BlazeHunter-325	BlazeHunter-335	BlazeHunter-625	BlazeHunter-635
<b>Resolution</b>	384x288, 50 Hz, 12 μm	640x512, 50 Hz, 12 μm	384x288, 50 Hz, 12 μm		640x512, 50 Hz, 12 μm	
<b>Magnification</b>	2.7 - 21x	1.7 - 13.5	2.8-22x	4-32	1.7-13.5	2.5-20x
<b>Field of view</b>	10.9° x 8.2°	17.5° x 14°	11 x 8.2	7.8 x 5.9	18 x 13.5	12.4 x 10
<b>Display Resolution</b>	AMOLED 800x600			OLED 1440x1080		
<b>Eye relief</b>	15 mm			15 mm		
<b>Color modes</b>	white hot, alarm, black hot, iron red			white hot, black hot, iron red, alarm, emerald, amber		
<b>Battery type</b>	Integrated, rechargeable			replaceable, rechargeable, 2 x type 18650		
<b>Battery life (Li-ion)</b>	>7h			>15 h		
<b>Charging</b>	USB Type-C			Separate charger		
<b>IP rating</b>	IP67					
<b>Human Detection Range, m</b>	1300	1300	1300	1800	1300	1800
<b>Operating Temperature</b>	-30° C to 55 °C					
<b>Dimensions</b>	57 x 50 x 157 mm			152 mm x 42 mm x 74 mm		
<b>Weight</b>	0.31 kg			0.34 kg without battery		
<b>Warranty</b>	3 years					

\*Specifications subject to change without notice



# 10X42 LRF SERIES

## LASER RANGEFINDING BINOCULARS



### **10x 10X MAGNIFICATION**

Offers powerful zoom for detailed target identification.

### **ADVANCED LASER RANGEFINDER**

Combines high-quality binocular vision with a state-of-the-art rangefinder.

### **ENHANCED OLED RED DISPLAY**

Delivers a brighter image and improved color quality for clear viewing.

### **PROSHIELD AND EVER-LIGHT LENS COATINGS**

Ensures maximum light transmission and optical clarity in various lighting conditions.

### **BIX WITH FREE LASER BALLISTIC APP**

Compatibility with ATN Mars 4 & 5 and X-Sight devices and ATN Laser Ballistics App.

### **RUBBER ARMOR WITH SHOCKPROOF DESIGN**

Capture crucial moments with stunning clarity at 240 frames per second.

## SPECIFICATIONS

	10x42 LRF 2000	10x42 LRF 3000
Item #	BN1042LRF2K	BN1042LRF3K
LRF Range	5-2000 m	5-3000 m
Accuracy	±1 m (y)	
Magnification	10x	
Objective lens effective diameter	42 mm	
Field of view	7°	
Focus System	Fixed/Focus Free	
Focus Range	10 m (y) to infinity	
Eye Relief	16 mm	
Exit pupil diameter	3.3 mm	
Diopter adjustment range	±5 diopters	
Display	High transmission, OLED	
Optical coatings	Multi-layer coating	
LRF laser wavelength	905 nm	
Bluetooth	Yes	
Body material	ABS plastic and rubber	
Waterproof	IPX6	
Battery	CR2 (3 V)	
Compatibility	X-Sight 5 Series, Mars 4 Series, Mars 5 Series and Mars 5 XD Series	
Dimensions L x W x H	145x129x60 mm	
Weight with caps and battery	0.73 kg	
Warranty	2 years	

\*Specifications subject to change without notice.

## OPTIONAL ACCESSORIES



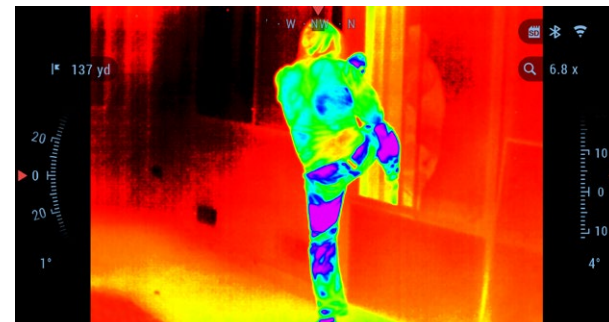
**DELUXE  
BINOCULARS BAG**





# BINOX 4T SERIES

SMART HD THERMAL BINOCULARS W/ BUILT-IN LASER RANGEFINDER



\*scope view



## HIGH SENSITIVITY THERMAL SENSOR

Offers exceptional clarity and detail, ensuring precise target identification in various lighting conditions.

## HD VIDEO RECORDING

Efficiently captures your experiences in high-definition, enabling vivid playback and easy sharing of your adventures.

## LASER RANGEFINDER

Perfect for varied uses like hunting, sports, surveillance, and golfing, providing quick and accurate distance measurements at the press of a button.

## LOW POWER CONSUMPTION

Offers more than 16 hours of continuous operation, ideal for long-duration outdoor activities where charging options are limited.

## ADAPTABLE INTERPUPILLARY ADJUSTMENT

Allows for adjustable lens spacing and includes comfortable eye support, ensuring a tailored and fatigue-free viewing experience.



## SPECIFICATIONS

	BinoX 4T 1.25-5x	BinoX 4T 2-8x	BinoX 4T 4.5-18x	BinoX 4T 1-10x	BinoX 4T 1.5-15x	BinoX 4T 2.5-25x
Item #	TIBNBX4381L	TIBNBX4382L	TIBNBX4384L	TIBNBX4641L	TIBNBX4642L	TIBNBX4643L
Sensor	384x288			640x480		
Magnification	1.25-5x	2-8x	4.5-18x	1-10x	1.5-15x	2.5-25x
Field of view	16°x12.5°	12°x9.5°	6x4.7°	32°x25°	24°x19°	12.5°x9.7°
Display Resolution	1280x720x2 px					
Interpupillary adjustment range	60-70 mm					
Eye relief	10-30 mm					
Focus Range	10 ft to infinity					
Laser Rangefinder	Yes					
Precision to	± 1 y/m					
Range	5-1000 y/m					
Video Record Resolution	Up to 1280x960p @ 30/60fps					
IP rating	Weather Resistant					
Charging	USB, type C					
WiFi (Streaming, Gallery, & Controls)	iOS & Android					
Micro SD Card	4 to 64 GB					
Battery life (Li-ion)	15+ hrs					
Human Detection Range, m	750	960	1800	830	1050	1950
Human Recognition Range, m	335	480	720	350	530	800
Human Identification Range, m	205	300	430	225	330	475
Dimensions	240 x 128 x 67 mm					
Weight	1.12 kg					
Warranty	3 years					

\*Specifications subject to change without notice

## OPTIONAL ACCESSORIES



**ATN EXTENDED  
LIFE BATTERY KIT**



**SANDISK EXTREME  
64GB MICROSDXC**



**DELUXE  
BINOCULARS BAG**

www.atneu.com e-mail: sales@atneu.com, sales@atnuk.com



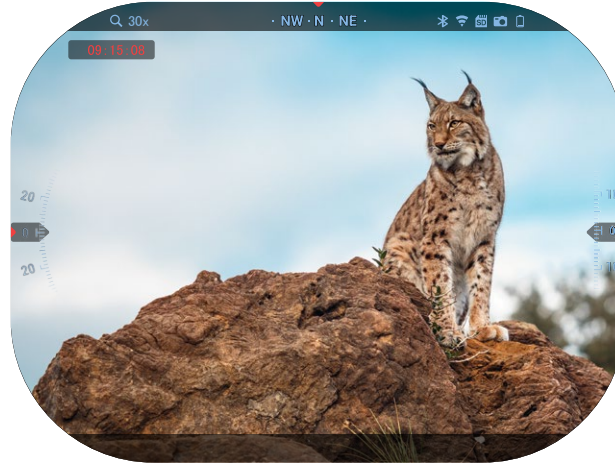
**4K+**  
SENSOR

SMART HD  
OPTICS

**5**  
GEN

# X-SPOTTER 5 20-100X

ULTRA HD 4K+ DAY/NIGHT SPOTTING SCOPE



## **4K** ULTRA 4K SENSOR

Delivers high-resolution imaging for sharp, detailed views in both daytime and nighttime conditions.

## INTUITIVE USER INTERFACE

Offers a user-friendly experience with comprehensive features such as E-compass, Pitch and Yaw angles, and Ballistic corrections.

## ENHANCED IMAGE STABILIZATION

Features a built-in gyroscope and image stabilization technology for smooth and steady viewing.

## ADVANCED ENVIRON- MENTAL SENSORS

Includes GPS, barometer, gyroscope, and more for accurate data collection and navigation. Integrated with E-Compass and 3D Magnetometer for precise orientation.

## **4K** VIDEO RECORDING

Allows recording in Real 4K quality, ideal for capturing and sharing your outdoor adventures.

## ULTRA-LOW POWER CONSUMPTION

Ensures up to 14 hours of continuous operation, making it suitable for extended outdoor activities.

## SPECIFICATIONS

X-Spotter 5 20-100x	
Item #	DGSSX52080
Sensor	ATN 4K+ 4056x3040 30/60/120 FPS
Magnification	20-100x
Field of view, degrees	1.7
Field of view, m	3 m / 100m
Core	ATN Gen V Quad Core
Micro Display	1280x960
Eye relief	10-30 mm
Focus Range	10 ft - ∞
Video Record Resolution	Up to 4K UHD (30/60/120 fps)
WiFi (Streaming, Gallery, & Controls)	iOS, Android
Bluetooth	Yes
3D Gyroscope	Yes
3D Accelerometer	Yes
Electronic Compass	Yes
Smooth Zoom	Yes
Night Vision mode	Yes
Microphone	Yes
Digital Image Stabilization (EIS)	Yes
MicroSD card	4 to 64 Gb (V30 class)
HDMI over USB	Yes
USB, type C	Yes
Battery life (Li-ion)	Up to 14 hours
Waterproof rating / IP rating	Weather resistant
Operating Temperature	-28 °C to 48 °C
Dimensions	395x110x84 mm
Weight	1.45 kg
Warranty	2 years

\*Specifications subject to change without notice.

\*\*When choosing to use this option, the incorporation of your widgets are absent. Widgets would include reticle, time stamp, and logo that are added during video processing.

## OPTIONAL ACCESSORIES



**ATN X-TRAC 5  
REMOTE CONTROL**



## IR850 PRO LONG RANGE INFRA-RED ILLUMINATOR



ATN IR850 Pro an extremely powerful, long range 850 mW infrared illuminator for hunting and search and rescue use.

## IR850 SUPERNOVA EXTREME RANGE INFRA-RED ILLUMINATOR



ATN IR850 Supernova; an extremely powerful, long range infra-red illuminator with adjustable mount, that is perfect for hunting and search and rescue use.

## IR940 LONG RANGE INFRA-RED ILLUMINATOR



The IR940 IR illuminator provides a more covert experience when you want to stay hidden from your prey. Animals and people are not able to see the red glow when looking at the illuminator, even at the light source.

## EXTENDED LIFE BATTERY KIT 10,000 mAh BATTERY PACK



Don't let yourself be stuck without a functioning unit, because you didn't bring extra batteries to power your device. ATN Extended Life Battery kit can support your binoculars or monoculars for up to 15 hrs. You can use your devices longer and save money and the environment in the process. Enjoy your activities all day long — whether scouting, camping, bird watching, or surveillance. Designed to be used with the ATN line of Smart HD Optics: BinoX 4K and BinoX 4T.

## POWER WEAPON KIT 20,000 mAh BATTERY PACK



The ATN Extended Power Kit gives you plenty of juice whenever and wherever you need it. Up to 20 hrs of continuous use. Easy to recharge and can power other devices.

Designed to be used with the ATN line of Smart HD Optics: X-Sight 4K, Mars 4, X-Sight 5, Mars 5, Mars LTV.

## LOW PROFILE QUICK DETACH HEAVY DUTY MOUNT



The Low Profile Quick Detach Mount (LPQDM) is designed specifically to be used with the X-Sight 5, X-Sight LTV, Mars LT, Mars LTV and Mars 5 640 Series of scopes. The LPQDM allows you to quickly switch your scope between rifles; allowing you to take full advantage of the 6 different profiles you can utilize in your Smart HD scope. Simple to install and use, the quick detach mount provides a way for you to swap weapons easily, all while retaining zero.

## HIGH PROFILE QUICK DETACH HEAVY DUTY MOUNT



The High Profile Quick Detach Mount (HPQDM) is designed specifically to be used with the X-Sight 4K, Mars 4 and Mars 5 640/XD Series of scopes. The HPQDM allows you to quickly switch your scope between rifles; allowing you to take full advantage of the 6 different profiles you can utilize in your Smart HD scope. Simple to install and use, the quick detach mount provides a way for you to swap weapons easily, all while retaining zero.

## QUICK DETACH MOUNT



The ATN Quick Detach Mount is a great addition for your new X-Sight 4K or Mars 4. Take advantage of the profile manager of your scope, move it from platform to platform and still retain zero.

## TACTICAL CARRY CASE



The ATN Tactical Carry Case is a great addition to protect your investment. These carry cases are made out of high quality material with molle webbing and attachments to connect to your loadout gear or compatible backpack, chest rig or harness. Our tactical bags are perfect for the ATN OTS XLT and OTS LT models. Keep your tactical gear protected while out and about in the field.

## DELUXE BINOCULARS BAG



The ATN Deluxe Binoculars Bag is a comfortable and ergonomic bag with plenty of storage space for your BinoX 4K/4T and or OTS LT/4T units. Plus have easy access to your device and or needed accessories while in the field. Plenty of pockets and mesh webbing, for cables, batteries, power banks, auxiliary illuminators or cell phone.

## X-SOUND HEARING PROTECTOR



ATN X-Sound reduces harmful loud noise down to safe levels below 82 dB and enhances clarity of surrounding low level sounds such as conversations and announcements.

The ergonomic volume control knob allows for total adjustment of the two built-in omni directional microphones, while built-in wireless capability enables hands-free calling and music enjoyment. Or, connect a playing device via the 3.5 mm audio jack.

## THERMAL TARGETS



The ATN Thermal Targets are a great and easy way to Zero in your Thermal Scope, eliminating the frustration of finding a hot or cold target. It uses special material with an included heat source to give you a thermal signature that is easily picked up by your thermal scope. Package includes a set of 10 thermal targets.

## X-TRAC 5



Use the X-TRAC 5 to connect to your Gen 5 products and have the ultimate control over your device. Adjust settings and activate functions.





**ATN Europe LTD**

1588 Sofia Bulgaria ul. "Okolovrasten pat" 456B

Inter Logistic Park Office

Phone: +359 32570140

support@atneu.com • sales@atneu.com • dealers@atneu.com

**ATN Europe LTD (Registered in UK)**

09755904, 1 & 2 Skylon Place, Hursey Rd Hereford HR2 6NX

Phone: +44 2081451986 UK International Inquiries

sales@atnuk.com • support@atnuk.com

[www.atneu.com](http://www.atneu.com)